

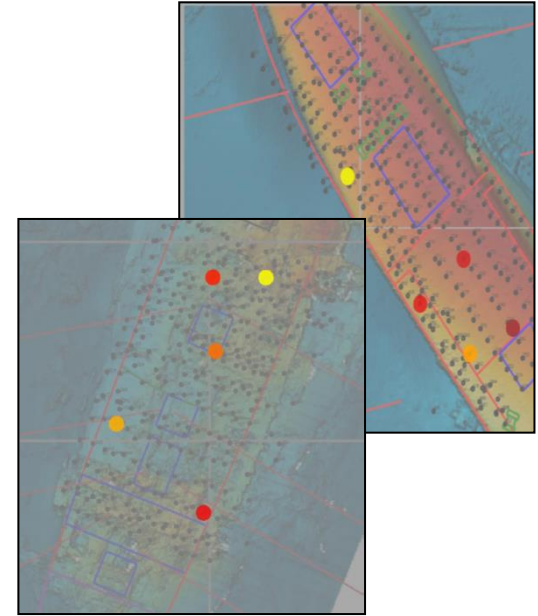
Advanced Survey Systems

Summary

- As part of the August 2017 survey campaign, Britannia's Gold Ltd (BGL) employed a highly advanced survey system as part of the survey scope of works
- The principal function of this leading edge technology is to identify different types of materials within the confines of a shipwreck without the need for physical intervention and visual inspection

Results

- On both targets where the system was utilised, concentrations of gold were identified
- Compellingly, in the same areas of the gold concentrations, wet wood was also identified which leads us to believe that the original packing cases still exist in some form
- The system has clearly matched the locations of gold within the shipwrecks with the BGL research data; density of gold concentrations vary between 0.5 and 1.0 meter



Historic Gold Packaging

- Gold 'specie' was held in sacks and packed in strong pine boxes, bound with iron bands, weighing about 160 pounds. The lids of the boxes were screwed on and then the boxes were sealed by a specially detailed official.
- Gold 'coins' were packed in canvas bags each of uniform denomination. They were tied up, sealed, and labelled with each bag weighed approximately 18 pounds, with eight bags packed and sealed into an ordinary wooden box each bound with strips of thin iron, each box weighing 160 pounds.

